

Laboratory oven 6 kW 2445..2475 MHz & 5 kW 900..930 MHz

Based on Magnetron Technology



Application

Laboratory oven for various high temperature applications up to 1000° C

Technical Data

Type of Microwave Generators	Magnetron
Power	6 kW 2445..2475 MHz 5 kW 900..930 MHz
Power Input	max. 21 kVA
Main Supply	3x 400 VAC, 50 Hz/ N/ PE

Cooling

Water cooling

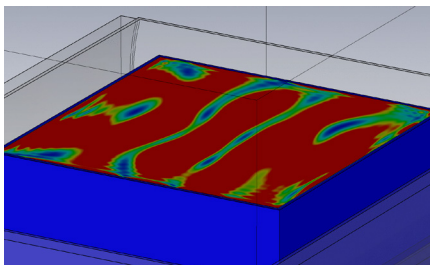
Total cooling water flow rate	Minimal 16 l/min.
Water temperature	22° - 25° C

Dimensions

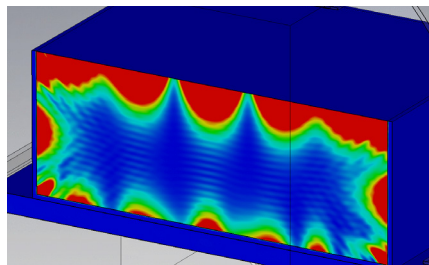
Outer dimension WxHxD	2230 x 1600 x 1650 mm
Inner dimension	Ø 590 mm
Weight	ca. 750 kg

Features

- Weighing system up to 10 kg for 800 measurements / second
- Combination of both frequencies, 2450 MHz and 915 MHz
- Homogeneity guaranteed by simulations with CST Studio
- LabView control



Power loss density - horizontal



Power loss density - vertical



Switch Mode Power Supplies