

# Laboratory oven 500 W 2400..2500 MHz & 1 kW 900..930 MHz

## Based on Solid State Microwave Technology



### Application

Laboratory oven for various high temperature applications up to 1200° C

### Technical Data

Type of Microwave Generators	Solid State
Power	500 W 2400..2500 MHz 1000 W 900..930 MHz continuously and steplessly adjustable
Power Input	designed for 7,5 kVA & 16 A each phase
Main Supply	3x 400 VAC, 50 Hz/ N/ PE

### Cooling

#### Water cooling

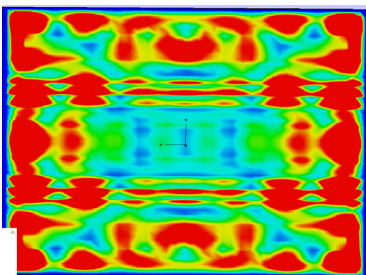
Total cooling water flow rate	Minimal 16 l/min.
Water temperature	22° - 25° C

### Dimensions

Inner dimension WxHxD	209 x 90 x 195 mm
Outer dimension WxHxD	719 x 1415 x 1331 mm
Weight	ca. 150 kg

### Features

- Movable thermocouple for measurement in the product
- Isolation for a temperature resistance up to 1200° C
- Combination of both frequencies, 2450 MHz and 915 MHz
- Homogeneity guaranteed by simulations with CST Studio
- PLC control with Touch Panel



Power loss density distribution



Isolation

