

Microwave Chamber Dryer

36 kW / 2445...2475 MHz & 10 kW / 910...920 MHz



Application

Microwave chamber dryer for homogeneous drying of various refractory products.

Technical Data

Power 6 x 6000 W = 36 kW 2445..2475 MHz
2 x 5000 W = 10 kW 910..920 MHz
 continuously and steplessly adjustable

Main supply 400V_{AC}, 230 V_{AC}, 50 Hz

Cooling

Water cooling

Flow temperature 20° - 22° C
 Water Flow Rate max. 120 l/min.

Dimensions

Outer dimension

Width 2200 mm
 Depth 3700 mm
 Height (total) 3600 mm

Inner dimension

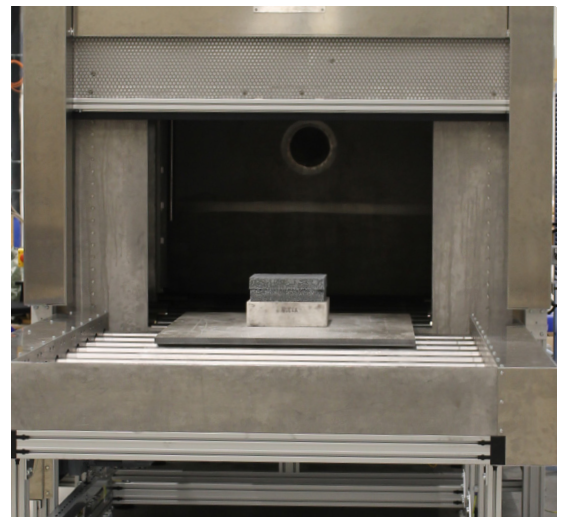
Width 1200 mm
 Depth 1200 mm
 Height 900 mm

Housing

Stainless steel microwave cavity

Features

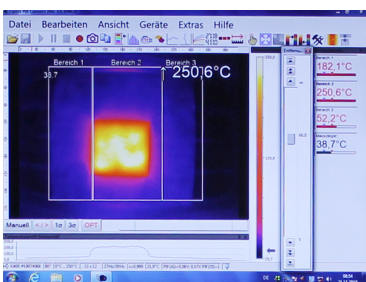
- Microwave development (Chamber, Feeds) with CST Studio Suite
- Movable frequency controlled roller conveyor, usable dimensions 1500x2000 mm, loads up to 2000 kg
- Humidity measurement up to 250° C
- Heating of refractories up to 400° C in just 3 hours
- PLC Control with Touch Panel



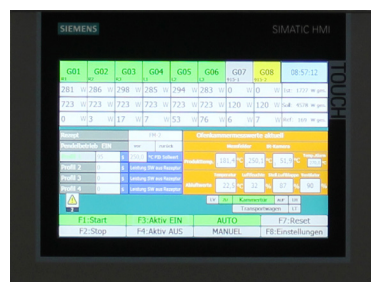
Roller Conveyor for easy loading



Cabinet with Switch Mode Power Supplies



IR Check of Temperature



PLC Control