

# Microwave Chamber Dryer

## 36 kW / 2445...2475 MHz & 10 kW / 910...920 MHz



### Application

Microwave chamber dryer for homogeneous drying of various refractory products.

### Technical Data

Power 6 x 6000 W = 36 kW 2.45 GHz  
2 x 5000 W = 10 kW 915 MHz  
 continuously and steplessly adjustable

Main supply 400V<sub>AC</sub>, 230 V<sub>AC</sub>, 50 Hz

### Cooling

#### Water cooling

Flow temperature 20° - 22° C  
 Water Flow Rate max. 120 l/min.

### Dimensions

#### Outer dimension

Width 2200 mm  
 Depth 3700 mm  
 Height (total) 3600 mm

#### Inner dimension

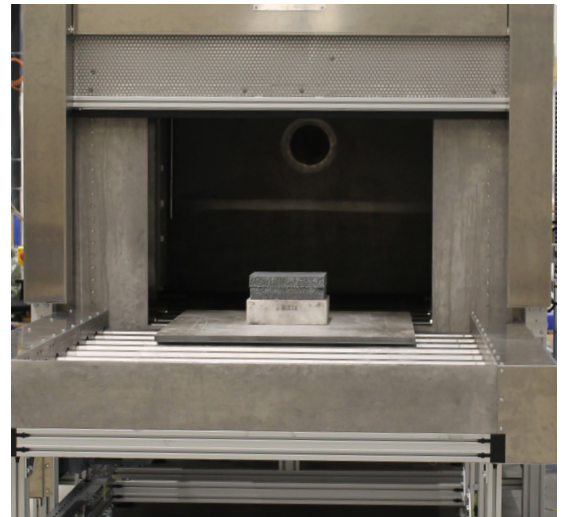
Width 1200 mm  
 Depth 1200 mm  
 Height 900 mm

### Housing

Stainless steel microwave cavity

### Features

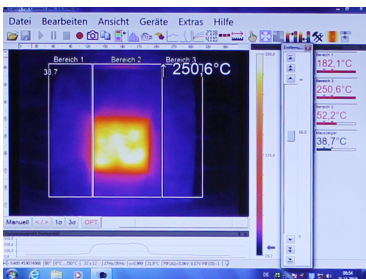
- Microwave development (Chamber, Feeds) with CST Studio Suite
- Movable frequency controlled roller conveyor, usable dimensions 1500x2000 mm, loads up to 2000 kg
- Humidity measurement up to 250° C
- Heating of refractories up to 400° C in just 3 hours
- PLC Control with Touch Panel



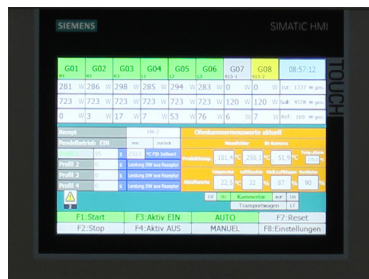
Roller Conveyor for easy loading



Cabinet with Switch Mode Power Supplies



IR Check of Temperature



PLC Control