

Microwave Vacuum Furnace MWVCF 8 kW / 2440..2470 MHz



Applications

Various high temperature applications like Liquid Silicon Infiltration (LSI) under vacuum atmosphere.

Dimensions

Inner dimension

Height	254 mm
Diameter (without isolation)	416 mm
Diameter (with isolation)	216 mm

Outer dimension

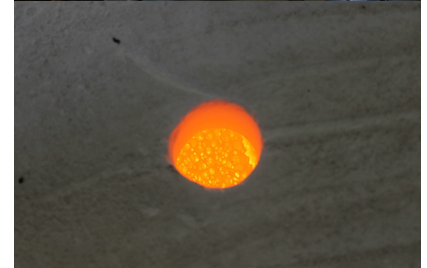
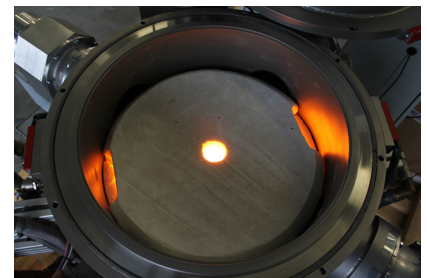
Cavity and Generator WxHxD	1410x1581x1410 mm
Cabinet WxHxD	600x2100x800 mm

Technical Data

Power	4 x 2000 W = 8 kW stepless adjustable 0.2 - 8 kW
Frequency	2440..2470 MHz
Main supply	3x400V AC 50Hz N / PE

Features

- Design of the microwave chamber and feeding points with CST Studio®
- Operating temperature up to 1600° C
- Cavity made of stainless steel
- Double wall water cooling of the cavity
- Vacuum cavity for an operating pressure down to 0.05 mbar



Test setup (up to 1500° C)

