

Chamber Oven 2 kW / 2400...2500 MHz

Based on Solid State Microwave Technology



Application

- Bakery oven for bread backing
- Increased homogeneity without moving parts
- Acceleration of baking processes by up to 75%
- Avoidance of Acrylamide
- Significantly lower water loss due to more intensive starch pasteurisation results in fresher results

Technical Data

Type	Solid State
Power	4 x 500 W = 2 kW stepless adjustable in 1 W - steps
Frequency with matched load	2400...2500 MHz stepless adjustable in 1 MHz - steps
Supply voltage	200 V _{AC} , 50 Hz
Total power consumption	11 kVA

Cooling

Water cooling

Cooling water flow rate	Minimal 8 l/min.
Water temperature	20° - 25° C
Inlet pressure	min. 3.5 bar, max. 5 bar

Dimensions

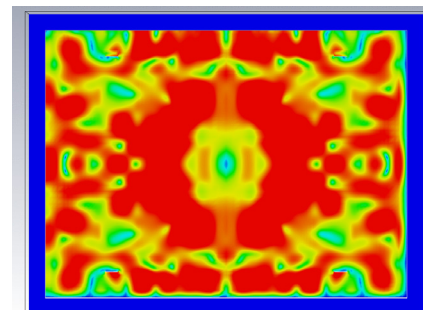
Outer dimension WxHxD	1100 x 1765 x 860 mm
Weight	ca. 350 kg

Housing

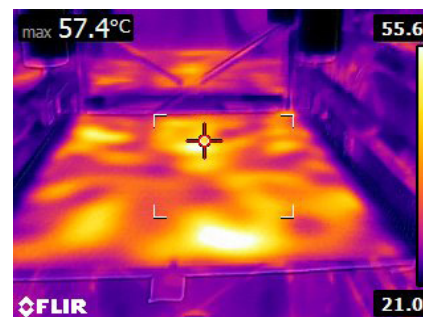
Microwave chamber and oven cover made of stainless steel

Features

- Chamber lighting
- Humidity sensor or regulation
- Hot air ventilation adjustment - 8 positions, closed circuit



Simulation of power flow



IR check of homogeneity