

# Chamber Oven 10kW / 900...930 MHz

## Based on Solid State Microwave Technology



### Application

Food industry: Poultry, meat and seafood / sea fish  
 Defrosting, Heating, Pasteurizing

### Technical Data

Type of Microwave Generators	Solid State
Power	10 x 1000 W = 10 kW stepless adjustable in 1 W - steps
Frequency	900...930 MHz stepless adjustable in 1 MHz - steps
Main supply	3x400V <sub>AC</sub> 50Hz / PE 63A / 18kVA

### Cooling

#### Water cooling

Flow rate	60 l / min.
Flow temperature	20° - 25° C
Supply Pressure	3-4 bar

### Dimensions

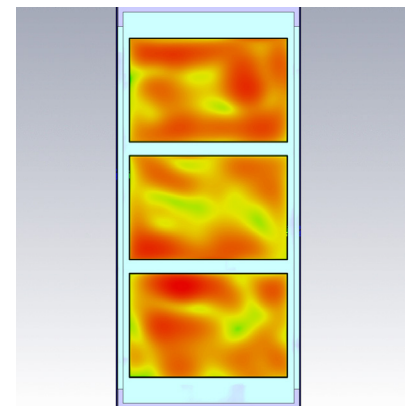
Inner dimension WxHxD	620x420x1680 mm
Outer dimension WxHxD	2000x2500x2200 mm
Weight	2 tons

### Housing

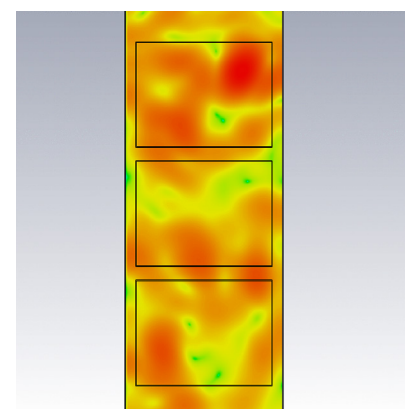
Stainless steel microwave cavity in hygienic design

### Features

- Microwave development (Chamber, Feeds) with CST Studio Suite
- 12" Control Monitor
- 9" Touchpanel for PLC control
- Conveyor belt transport system, blue, 608 mm width, 3510 mm length
- Two fully automatic sliding doors with sight window on one sight
- Light inside the cavity
- Exhaust system



Simulation of power loss pattern



Simulation of power flow