

## General Information



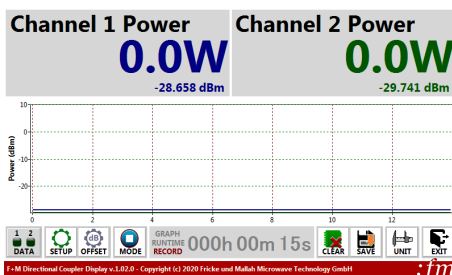
The Waveguide based RF Power Measurement System **FM-DCR26PD1CH** provides the user a precision stand-alone concept to monitor and document the forward and reverse RF power in the frequency range from 2400 MHz up to 2500 MHz.

To separate the forward and reverse RF power the directional coupler **FM-HLR26FD00200FDGX** is used. The two power detectors **FM-PD1CH2450N** can be directly connected to the directional coupler. With a customer specific calibration a precision RF power measurement in a power range from 10 Watt up to 10000 Watt possible.

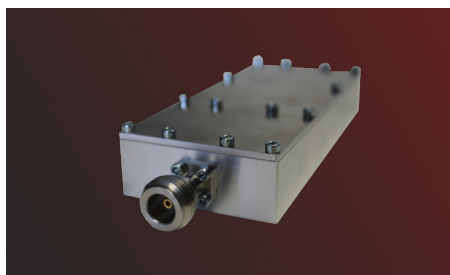
The software allows the display of the forward and reverse power in watts as well as in dBm. Furthermore, the power curve is displayed over time. The frequency can be corrected for an accurate measurement (by manual input of the user). After the measurement, the power curves over time can be exported in the various data formats for tabulation.

## Specification

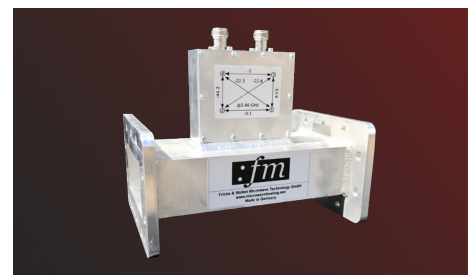
Frequency Range	2400MHz to 2500MHz
Absolute maximum RF input power	70 dBm (10 kW)
Dynamic range	30 dB
Waveguide Flange of the Directional Coupler	IEC153: R26 / EIA: WR340
Measurement Unit Size without Cable (WxHxL)	140 x 400 x 200 mm
PC connection	USB Type A



**Graphical User Interface**  
 Record of the RF power over the time



**Power Detector Device**  
 FM-PD1CH2450N



**Directional Coupler R26**  
 FM-HLR26FD00200FDGX

## Scope of delivery

- Directional Coupler R26
- 2 X N Male to Male adapter
- 2 x FM PD1CH2450N
- 2x Sub 9D Plug to USB (approx. 1,8 meter)
- PC-Software