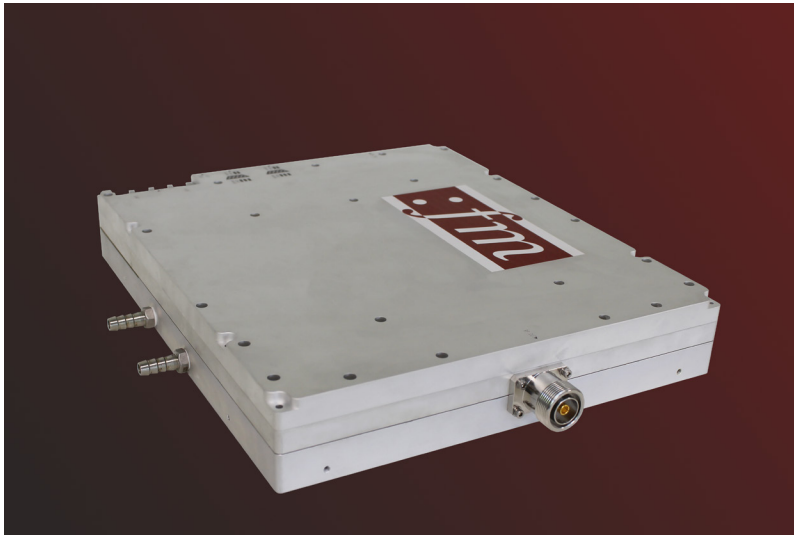


# Solid State Microwave Generator 2400..2500 MHz, 1250 W

FM - SG1K3W0CG0



## Features



- Designed for industry heating and plasma process application
- Output load VSWR Protection
- High efficiency water cooling mechanical design in a compact and robust housing
- Compact dimensions for integration in devices, analogs or on machines
- Control via RS422/RS485 (FM own protocol)
- With internal isolators and internal software control that intervenes before. The generator is suitable for permanent 250W reverse power. If a higher reverse power occurs, the generator switches off automatically after 5s
- Temperature compensated bias and power control
- Temperature monitoring and protection mechanisms for reliable 24/7 operation in industrial processes

## Specification

### Electrical and Technical Data

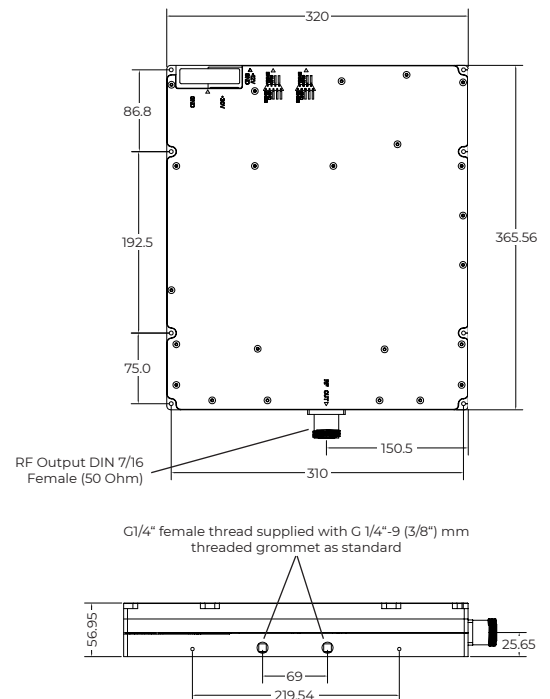
|                         |                                 |
|-------------------------|---------------------------------|
| Frequency band          | 2400..2500 MHz                  |
| Maximum output power    | 1250 W<br>61 dBm                |
| Efficiency              | ≥ 50 %                          |
| Power setting range     | 20 - 1250 W<br>5 W-steps        |
| Frequency setting range | 2400..2500 MHz<br>0.1 MHz-steps |
| Pulse frequency         | 1 - 20 kHz                      |
| Duty cycle              | 20 - 100 %                      |
| Pulse rise time         | ≤ 200 ns                        |
| Pulse fall time         | ≤ 200 ns                        |
| MTBF                    | ≥ 100000 h                      |
| Power supply PA         | 32 V <sub>DC</sub>              |
| Power supply SG         | 12 V <sub>DC</sub>              |
| DC power consumption    | 2700 W max.                     |

### Ambient Conditions

|                           |                                   |
|---------------------------|-----------------------------------|
| Environment temperature   | +10° to +45° C                    |
| Water flow                | ≥ 6 l/min.                        |
| Cooling water temperature | +18° C to +27° C (non condensing) |
| Cooling water pressure    | 3-5 bar                           |

### Mechanical Data

|                               |                         |
|-------------------------------|-------------------------|
| Dimensions of housing (WxHxD) | 365.56 x 56.95 x 320 mm |
| Weight                        | 7 kg                    |



Power Supply and Control Connections