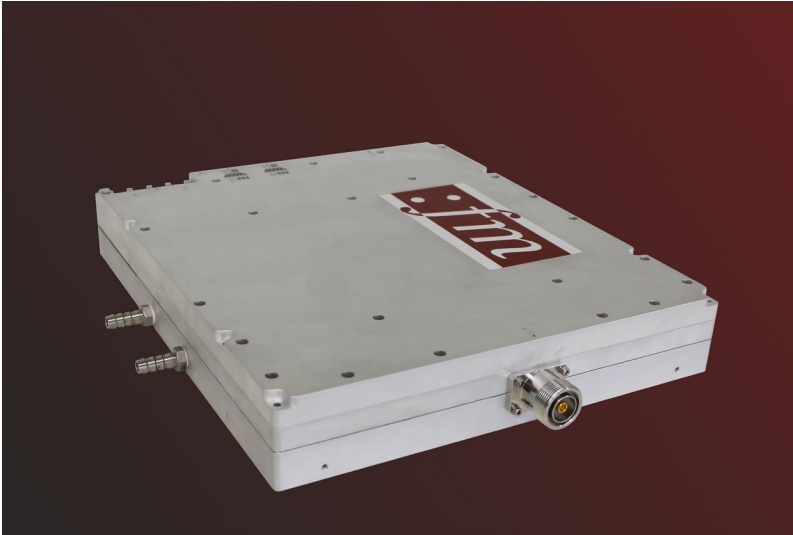


Solid State Microwave Generator 2400..2500 MHz, 1250 W

FM - SG1K3W0CG0



Features



- Designed for industry heating and plasma process application
- Output load VSWR Protection
- High efficiency water cooling mechanical design in a compact and robust housing
- Compact dimensions for integration in devices, analogs or on machines
- Control via RS422/RS485 (FM own protocol)
- With internal isolators and internal software control that intervenes before. The generator is suitable for permanent 250W reverse power. If a higher reverse power occurs, the generator switches off automatically after 5s
- Temperature compensated bias and power control
- Temperature monitoring and protection mechanisms for reliable 24/7 operation in industrial processes

Specification

Electrical and Technical Data

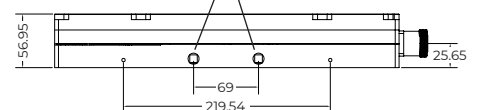
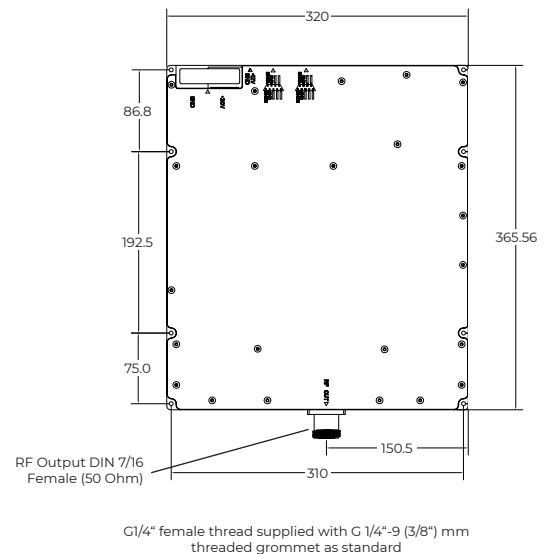
Frequency band	2400..2500 MHz
Maximum output power	1250 W 61 dBm
Efficiency	≥ 50 %
Power setting range	20 - 1250 W 5 W-steps
Frequency setting range	2400..2500 MHz 0.1 MHz-steps
Pulse frequency	1 - 20 kHz
Duty cycle	20 - 100 %
Pulse rise time	≤ 200 ns
Pulse fall time	≤ 200 ns
Power supply PA	32 V _{DC}
Power supply SG	12 V _{DC}
Maximum power consumption	max. 2700 W

Environmental

Environment temperature	+ 10° to + 45° C
Cooling water temperature	+18° C to +27° C (non condensing)
Water flow	≥ 6 l/min.
Cooling water pressure	≥ 3 bar
MTBF	≥ 100000 h

Mechanical Data

Dimensions of housing (WxHxD)	365.56 x 56.95 x 320 mm
Weight	7 kg



Power Supply and Control Connections