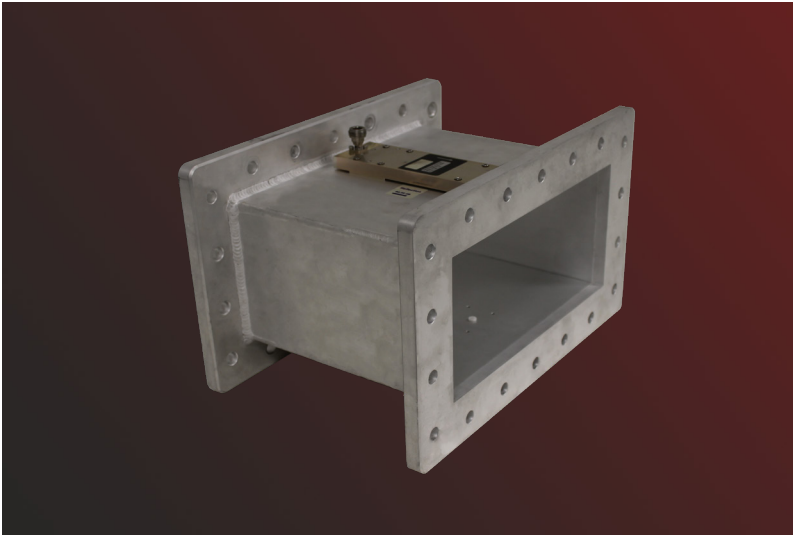


Directional Coupler – WR975/N(f)

FM-DCR9-60



General Information



FM-DCR9-60 Directional Coupler allow monitoring forward and reflected power in a waveguide transmission system.

The Directional Coupler with a coupling of 60 dB is equipped with standard N(f) connectors at the sidearm. Allowing the connection of standard power meters or spectrum analyzers.

RF Characteristics

Mainarm

Connector	IEC153: R9 / EIA: WR975
Length	220 mm
VSWR	1:1.1
Loss	<0.1 dB

Sidearm

Connector*	N(f) – 50 Ohm
Frequency Band	900-930 MHz
Coupling	-60 dB +/- 1 dB
Tolerance of the frequency band deviation (900-930 MHz)	<0.5 dB
Directivity	>25 dB

* One measuring point each on bottom and top side.