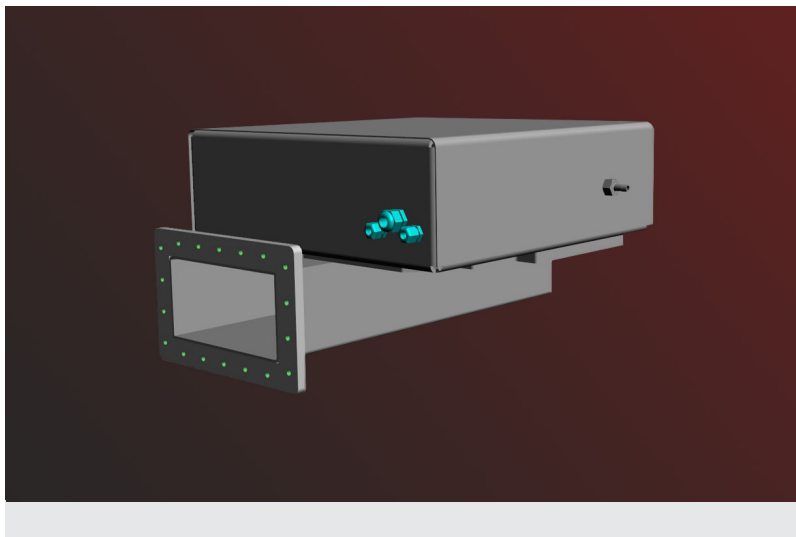


# Magnetronhead

FM - MH-5kW-915MHz-Water cooled



## General Information



### FM - 5kW / 915 MHz Water cooled

- 5kW HF-Power output
- 915 MHz
- Integrated filament transformer
- Integrated magnetron, water cooled
- Integrated Temperature switch
- Compact housing
- Interlock: Magnetron overtemperature
- Fully enclosed

## Specification

### Electrical and Technical Data

#### Output

Output Power	5kW
Frequency	910..920 MHz
Waveguide Type	IEC153: R9 / EIA: WR975

#### Magnetron

Type	MW5000NNx-f-915
Filament Voltage	5 +/- 0.2 V <sub>AC</sub>
Filament Current	31 A <sub>AC</sub>

### Cooling

#### Water Cooling

Waterflow / Pressure	4 l/min / 4 bar max.
Water temperature	+20°C to +25°C
Water quality	clear water
Connector	10 mm hose sleeves

### Mechanical Data

Dimensions of housing (WxHxD)	581 x 213 x 510 mm
Depth with flange	654 mm

