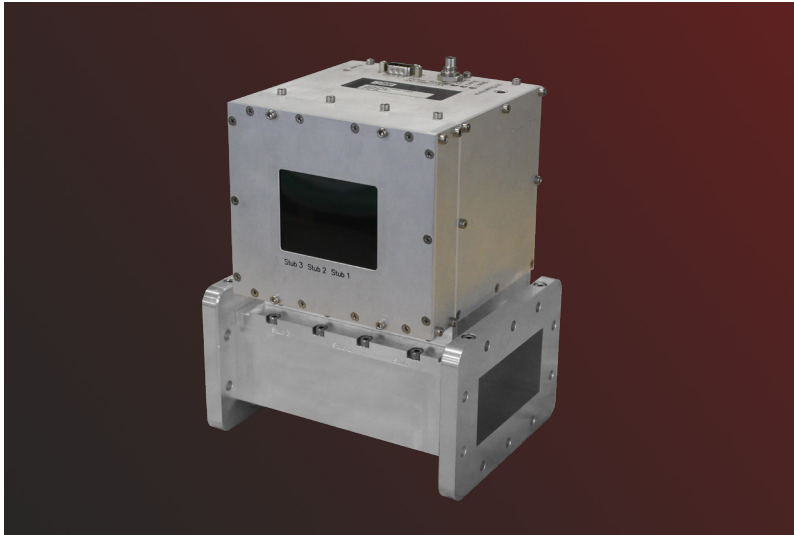


# Motorized 3-Stub-Tuner 2.45 GHz

## FM-T2R2610K0174X0



### General Information



### Motorized 3-Stub-Tuner 2.45 GHz

The motorized 3-stub waveguide tuner serves for manual impedance matching of WR340 waveguide loads in the 2450 MHz ISM band. Conversely, when terminated in a matched load, the Tuner can serve for realization of reflection coefficients covering an extensive area of the Smith Chart. Each stub is equipped with a stepper motor and a top-travel terminal switch. RS232 interface is available to the user for remote control and monitoring. The desired stub positions can be easily adjusted and monitored by a built-in 3.2" color LCD display with a touch panel (touchscreen).

### Specification

#### Electrical Data

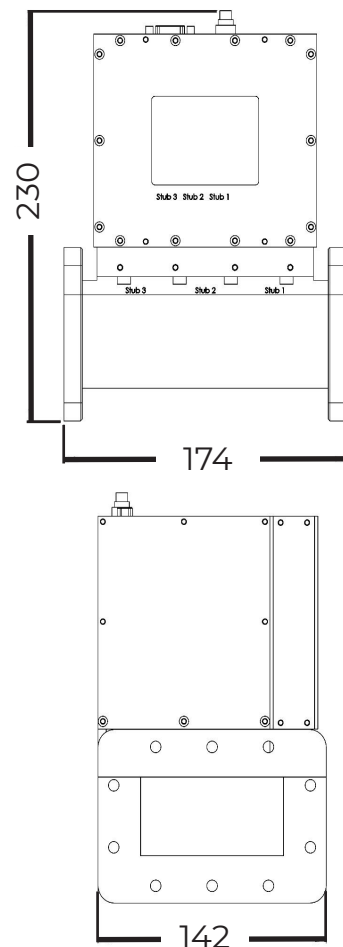
Waveguide type	IEC153: R26 / EIA: WR340 <sup>1</sup>
Flange type	IEC
Frequency range	2400..2500 MHz
Maximum working power <sup>2,3</sup>	10 kW
Power supply voltage	24 V ±10% DC
Peak current consumption (all stubs moving)	3 A
Interface	RS232 (RS422)

#### Tuning

Max tuning stub travel	25 mm
Tuning range	VSWR ≤ 10:1
Full stub insertion travel time	2.1 s

#### Mechanical and environmental Data

Weight	4.6 kg
Dimensions (WxHxL)	142x230x174 mm
Surface finish	E-CLPS 4600
Operating temperature range	+15 to +55 0C
Storage temperature range	-10 to +70 0C



<sup>1</sup> Stepped or tapered precision transitions to either R22 (WR430) or R32 (WR284) waveguide can be integrated upon request.  
<sup>2</sup> Maximum working power is specified for **matched load** conditions. For loads with high reflection coefficient magnitude (>0.9), the maximum power is derated to avoid arcing with deeply inserted tuning stubs. Please contact the manufacturer for details.  
<sup>3</sup> Please contact the manufacturer for maximum working power higher than the specified value.