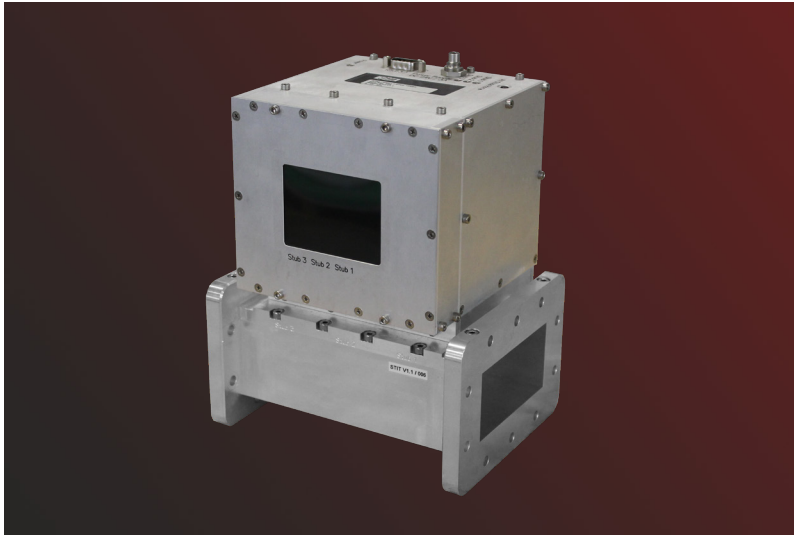


Intelligent Tuner STIT 2.45 GHz

FM-TR26-2450



General Information



Intelligent Tuner STIT 2.45 GHz

The STIT intelligent three-stub waveguide tuner of versions V1.x serves for manual impedance matching of WR340 waveguide loads in the 2450 MHz ISM band. Conversely, when terminated in a matched load, the STIT can serve for realization of reflection coefficients covering an extensive area of the Smith Chart. Each stub is equipped with a stepper motor and a top-travel terminal switch. RS232, RS422 and optionally CAN Bus interface is available to the user for remote control and monitoring. The desired stub positions can be easily adjusted and monitored by a built-in 3.2" color LCD display with a touch panel (touchscreen).

Specification

Electrical Data

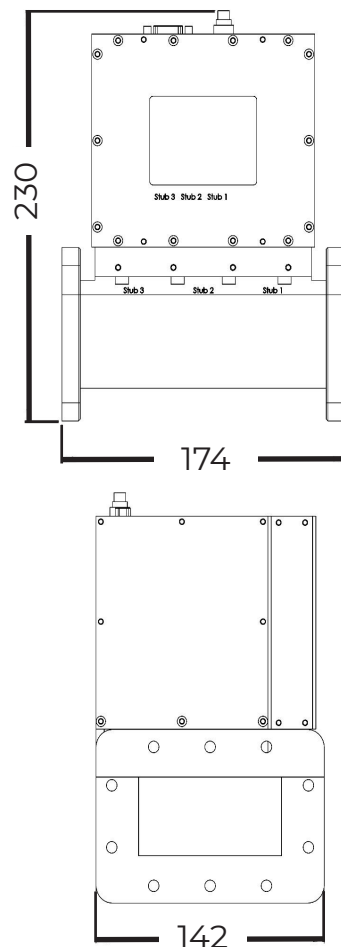
Waveguide type	IEC153: R26 / EIA: WR340 ¹
Flange type	IEC
Frequency range	2400..2500 MHz
Maximum working power ^{2,3}	10 kW
Power supply voltage	24 V ±10% DC
Peak current consumption (all stubs moving)	3 A
Interface	RS232 or RS422, CAN Bus

Tuning

Max tuning stub travel	25 mm
Tuning range	VSWR ≤ 10:1
Full stub insertion travel time	2.1 s

Mechanical and environmental Data

Weight	4.6 kg
Dimensions (WxHxL)	142x230x174 mm
Surface finish	E-CLPS 4600
Operating temperature range	+15 to +55 0C
Storage temperature range	-10 to +70 0C



¹ Stepped or tapered precision transitions to either R22 (WR430) or R32 (WR284) waveguide can be integrated upon request.

² Maximum working power is specified for **matched load** conditions. For loads with high reflection coefficient magnitude (>0.9), the maximum power is derated to avoid arcing with deeply inserted tuning stubs. Please contact the manufacturer for details.

³ Please contact the manufacturer for maximum working power higher than the specified value.