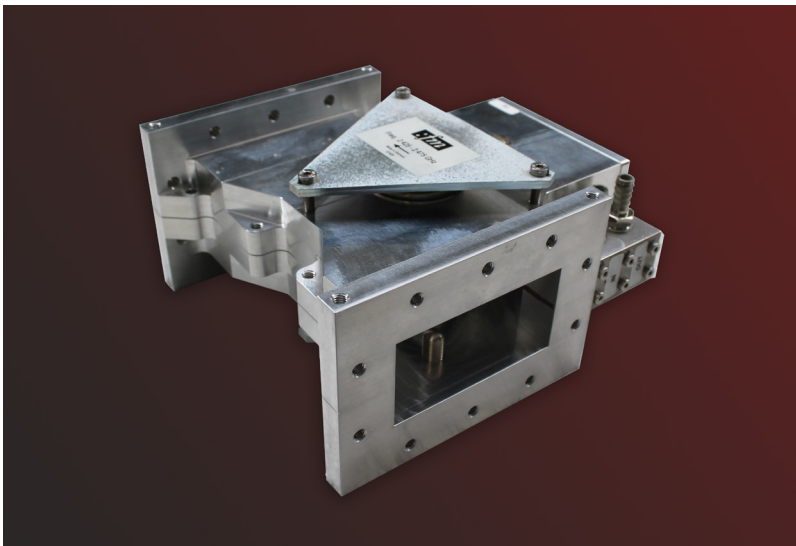


Microwave Components - Isolator 3 kW, 2425..2475 MHz

FM-IR26-3kW-30-00



General Information



Features

- Designed for industrial heating and plasma process applications
- 3000 Watt power capability forward and reverse
- Output load VSWR Protection
- High efficiency water cooling mechanical design in a compact and robust housing

Specification

Electrical and Technical Data

Frequency	2425...2475 MHz
Isolation	min 23 dB
Insertion loss	max 0.15 dB
Return loss	min 23 dB
Power (forward)	3 kW cw
Monitor coupling	-66.5 ±1 dB (@ 40°C)
Power (reflected)	3 kW cw
RF leakage	< 0.5 mW/cm ² (5 cm distance)

Environmental

Water inlet temperature	+10 ... +40 °C
Water outlet temperature	max +50 °C
Storage temperature	-10 ... +70 °C
Static water pressure	max 600 kPa

Mechanical Data

Waveguide type	IEC153: R26 / EIA: WR340
Mating flange drilled to	UDR26
Monitor connector (reverse)	N-female
Water connection	9 mm hose nozzle
Mounting position	any
Material	Aluminum alloy
Finish	clear
Mass	4,3 kg
Dimensions	181x220x95 mm

