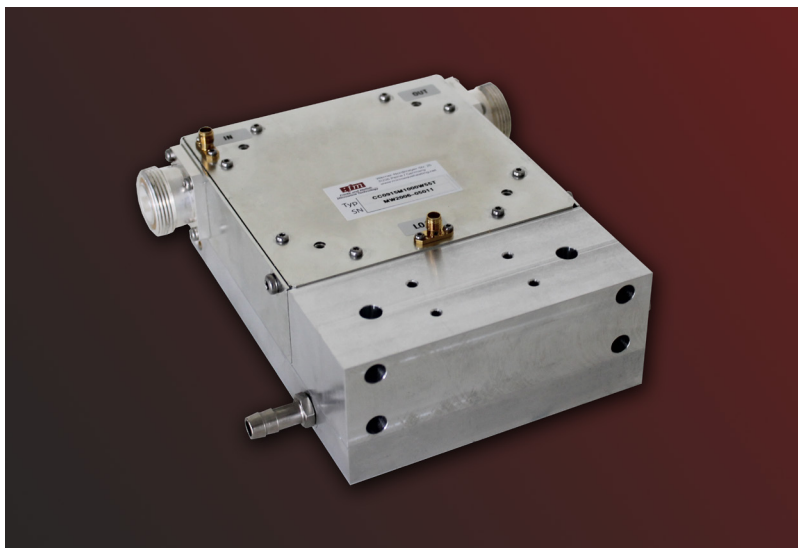


# Microwave Components - Isolator

## FM-I0915M1000W55T



### General Information



### Features

- Designed for industrial heating and plasma process applications
- 1000 Watt power capability
- Output load VSWR Protection
- High efficiency water cooling mechanical design in a compact and robust housing

### Specification

#### Electrical and Technical Data

Frequency band	900 - 930 MHz
RF maximum output power	1000 W 60 dBm
RF power into the load	1000 W 60 dBm
Isolation (over Frequency band)	> 23.0 dB
Return loss (over Frequency band)	> 23.0 dB
Insertion loss (over Frequency band)	< 0.3 dB
Monitor coupling (SMA female)	60dB ± 1 dB
RF Connectors	7/16 "
Water Connector	thread sockets G 1/8"-9

#### Environmental

Environment temperature	+ 10° to + 55° C
Cooling water temperature	+ 10° to + 30° C
Water flow	≥ 8 l/min.
Maximum case temperature	+50 °C

#### Mechanical Data

Dimensions incl. all connectors (WxHxD)	174.75 x 62.65 x 171 mm
Weight	3.3 kg

