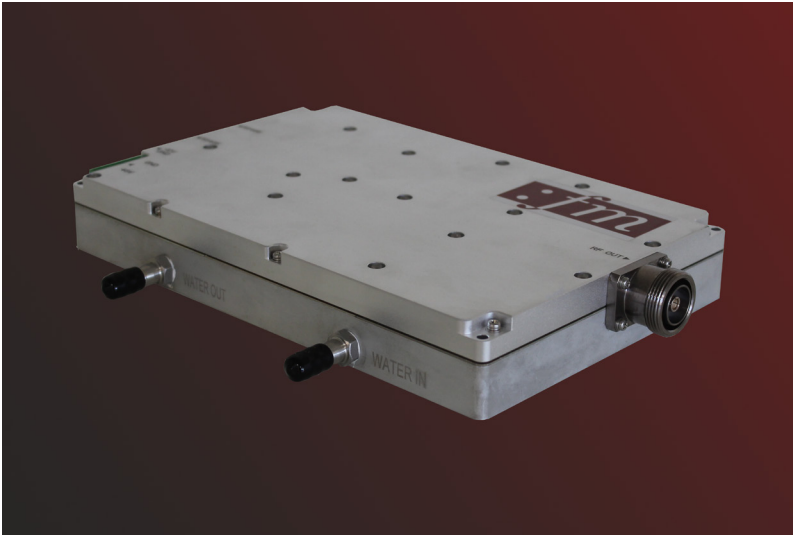


Solid State RF Generator

FM-SGW0915M1000W



General Information



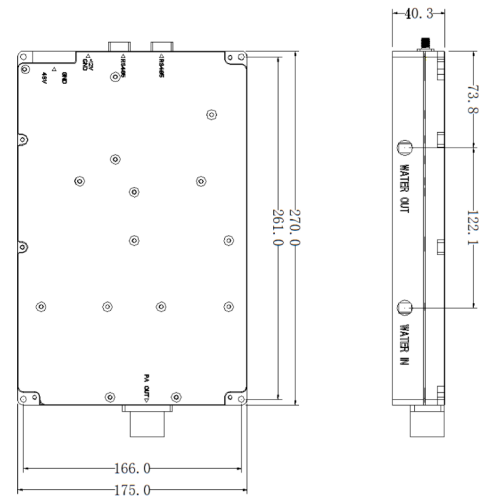
Features

- Designed for industry heating and plasma process application
- Frequency hopping with power adjustment for stable processing
- Frequency band 900 MHz – 930 MHz, adjustable in 100 kHz steps
- Maximum 1000 Watt output power
- 20 Watt - 1000 Watt setting range, adjustable in 1 W steps
- Output load VSWR Protection
- High efficiency water cooling mechanical design in a compact and robust housing

Specification

Electrical and Technical Data

Frequency band	900 - 930 MHz
RF maximum output power	1000 W 60 dBm
Efficiency (PAE)	≥ 60 %
Power setting range	20 - 1000 W 1 W-steps
Frequency setting range	900..930 MHz 100 kHz-steps
Pulse frequency	1 – 20 kHz
Duty cycle	20 – 100 %
Pulse rise time	≤ 200 ns
Pulse fall time	≤ 200 ns
Circulator / Isolator	Yes
Power supply PA	50 V _{DC}
Power supply SG	12 V _{DC}
Maximum power consumption	max. 2000 W



Environmental

Environment temperature	+ 10° to + 55° C
Cooling water temperature	+ 10° to + 30° C
Water flow	≥ 6 l/min.
MTBF	≥ 100000 h

Mechanical Data

Dimensions of housing (WxHxD)	270 x 40.3 x 175 mm
Weight	3.5 kg