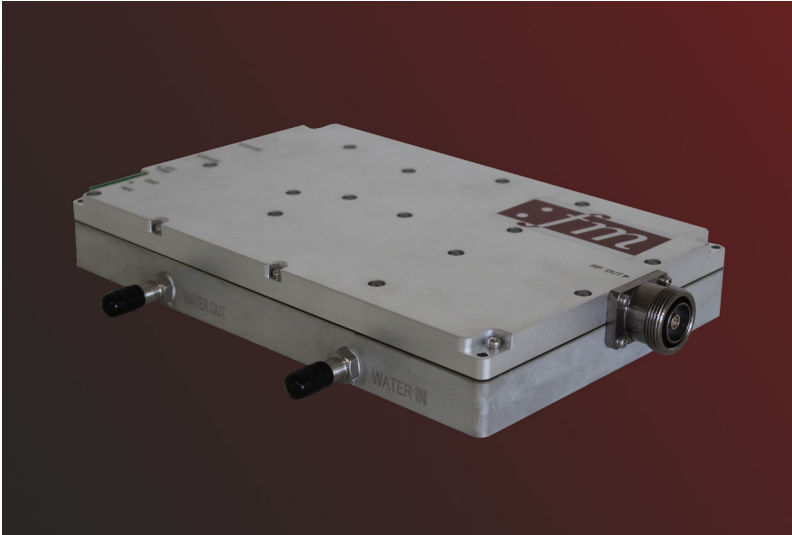


Solid State Microwave Generator 900..930 MHz, 1000 W

FM - SG1K0W0CFO



Features



- Designed for industry heating and plasma process application
- Output load VSWR Protection
- High efficiency water cooling mechanical design in a compact and robust housing
- Compact dimensions for integration in devices, analogs or on machines
- Control via RS422/RS485 (FM own protocol)
- With internal isolators and internal software control that intervenes before. The generator is suitable for permanent 250W reverse power. If a higher reverse power occurs, the generator switches off automatically after 5s
- Temperature compensated bias and power control
- Temperature monitoring and protection mechanisms for reliable 24/7 operation in industrial processes

Specification

Electrical and Technical Data

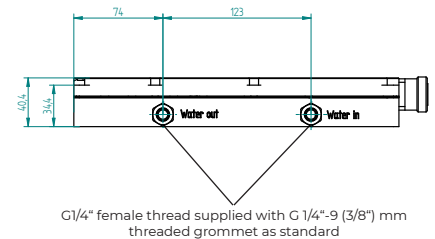
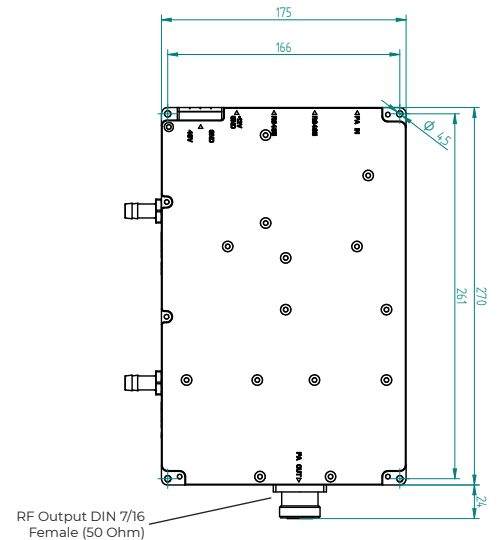
Frequency band	900..930 MHz
Maximum output power	1000 W 60 dBm
Efficiency	≥ 60 %
Power setting range	20 - 1000 W 1 W-steps
Frequency setting range	900..930 MHz 0.1 MHz-steps
Pulse frequency	1 - 20 kHz
Duty cycle	20 - 100 %
Pulse rise time	≤ 200 ns
Pulse fall time	≤ 200 ns
MTBF	≥ 100000 h
Power supply PA	50 V _{DC}
Power supply SG	12 V _{DC}
DC power consumption	2400 W max.

Ambient Conditions

Environment temperature	+10° to +45° C
Water flow	≥ 6 l/min.
Cooling water temperature	+18° C to +27° C (non condensing)
Cooling water pressure	≥ 3 bar

Mechanical Data

Dimensions of housing (WxHxD)	270 x 40,4 x 175 mm
Weight	3,5 kg



Power Supply and Control Connections