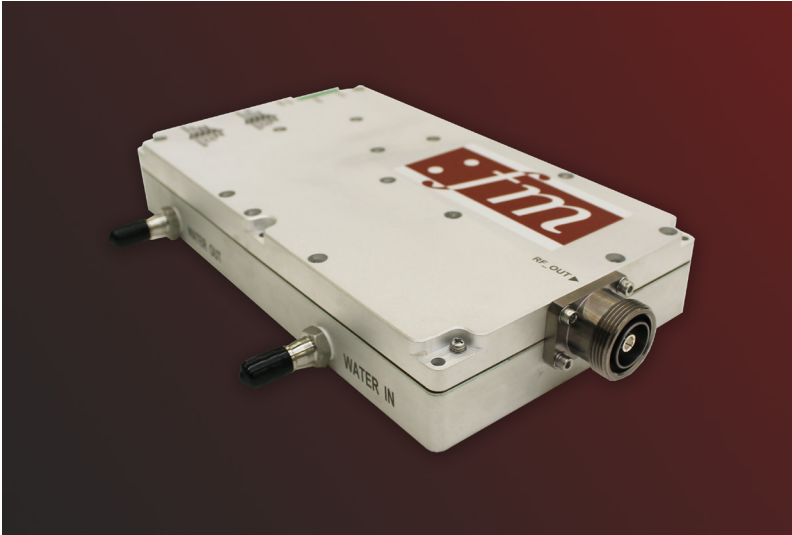


# Solid State RF Generator 2400..2500 MHz, 500 W

## FM - SGK50W0CGO



### Features



- Designed for industry heating and plasma process application
- Output load VSWR Protection
- High efficiency water cooling mechanical design in a compact and robust housing
- Compact dimensions for integration in devices, analogs or on machines
- Control via RS422/RS485 (FM own protocol)
- With internal isolators and internal software control that intervenes before. The generator is suitable for permanent 250W reverse power. If a higher reverse power occurs, the generator switches off automatically after 5s
- Temperature compensated bias and power control
- Temperature monitoring and protection mechanisms for reliable 24/7 operation in industrial processes

### Specification

#### Electrical and Technical Data

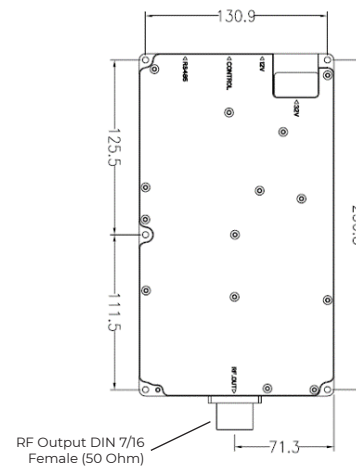
Frequency band	2400..2500 MHz
RF maximum output power	500 W 57 dBm
Efficiency	≥ 54 %
Power setting range	20 - 500 W 1 W-steps
Frequency setting range	2400..2500 MHz 0.1 MHz-steps
Pulse frequency	1 - 20 kHz
Duty cycle	20 - 100 %
Pulse rise time	≤ 200 ns
Pulse fall time	≤ 200 ns
Power supply PA	32 V <sub>DC</sub>
Power supply SG	12 V <sub>DC</sub>
Maximum power consumption	max. 1200 W

#### Environmental

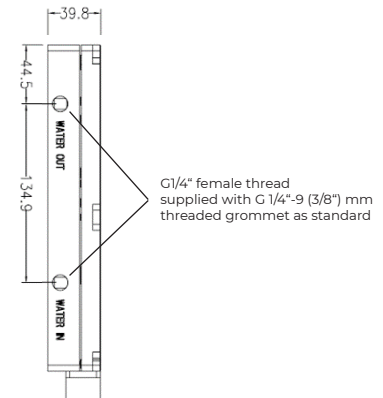
Environment temperature	+ 10° to + 45° C
Cooling water temperature	+18° C to +27° C (non condensing)
Water flow	≥ 4 l/min.
Cooling water pressure	≥ 3 bar
MTBF	≥ 100000 h

#### Mechanical Data

Dimensions of housing (WxHxD)	246 x 40 x 140 mm
Weight	2.5 kg



RF Output DIN 7/16 Female (50 Ohm)



G1/4" female thread supplied with G 1/4"-9 (3/8") mm threaded grommet as standard